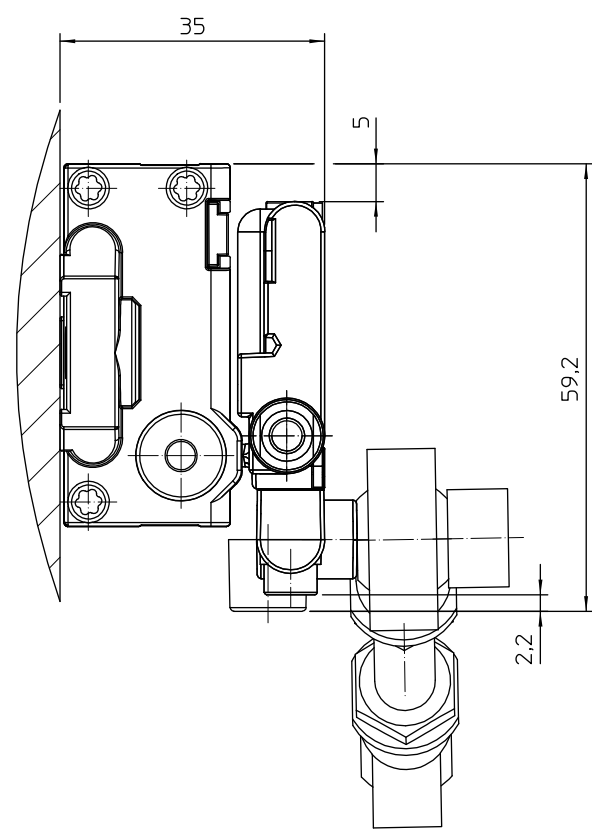
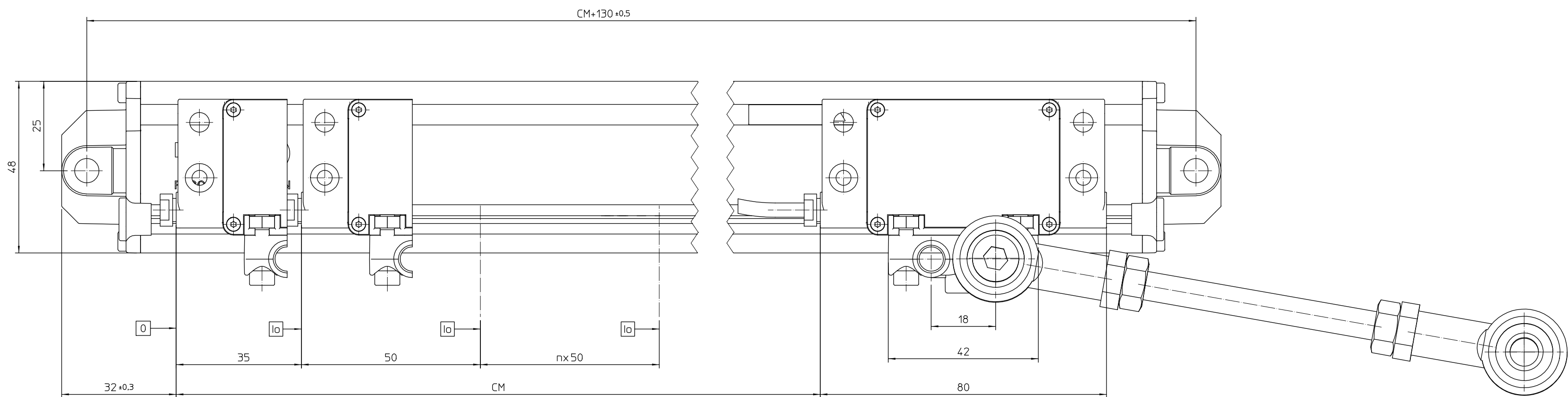


The technical drawing consists of two views of a mechanical assembly.

- Top View:** Shows a long horizontal component. A dimension line at the top indicates a total length of $\text{CM}=144$. On the left side, there are two small rectangular features, each with a width dimension of 24 and a height dimension of 10 .
- Bottom View:** Shows a similar horizontal component from below. It includes a vertical extension on the right side. This extension has a diameter dimension of 96 and a length dimension of $45,16$. There are also surface texture symbols on this view: a square symbol with a diagonal line and the value 0.5G , and another square symbol with a diagonal line and the value 0.1 .



CM = Curso medición
CM = Measuring length
G = Guía máquina
G = Machine guideway
0 = Comienzo curso medición CM
0 = Code start value
lo = Marca de referencia
lo = Reference marks

						Escala:	1:1
							mm
							Tolerancing ISO 8015
							ISO 2768 - m H
							< 6 mm±0.2 mm
Nº	Modificado		Propu.	Vº Bº	Fecha		
Nº	Designación	PB-570	Cant.	Material	Acabado	Tratamiento	
Plano Nº		El 05-10-16		Fagor Automation S. Coop.			
Sustituye a:		Dibujado Sormen		20500 Mandragón			
		Comprobado					
4	1	3		2		1	